

abbotFox



Wymondham, NR18
Guide Price £160,000

“

We are a team of genuine individuals who hold a deep passion for both property and marketing. Collectively, we bring over 70 years of experience in the property market of Norfolk and Suffolk. Our affection for both counties runs deep, and we are enthusiastic about sharing our passion with you.

Colin McKenzie | **Branch Partner**







THE DETAIL _____

****GUIDE PRICE £160,000 - £170,000****

abbotFox presents this one bedroomed, end terraced house, nestled within a quiet close within a short walk of Wymondham Town Centre.

Occupying a prime position, which affords a sense of peace and quiet, yet the convenience of living within the town, and providing excellent access to the A11, this home represents an ideal opportunity for any first time buyer.

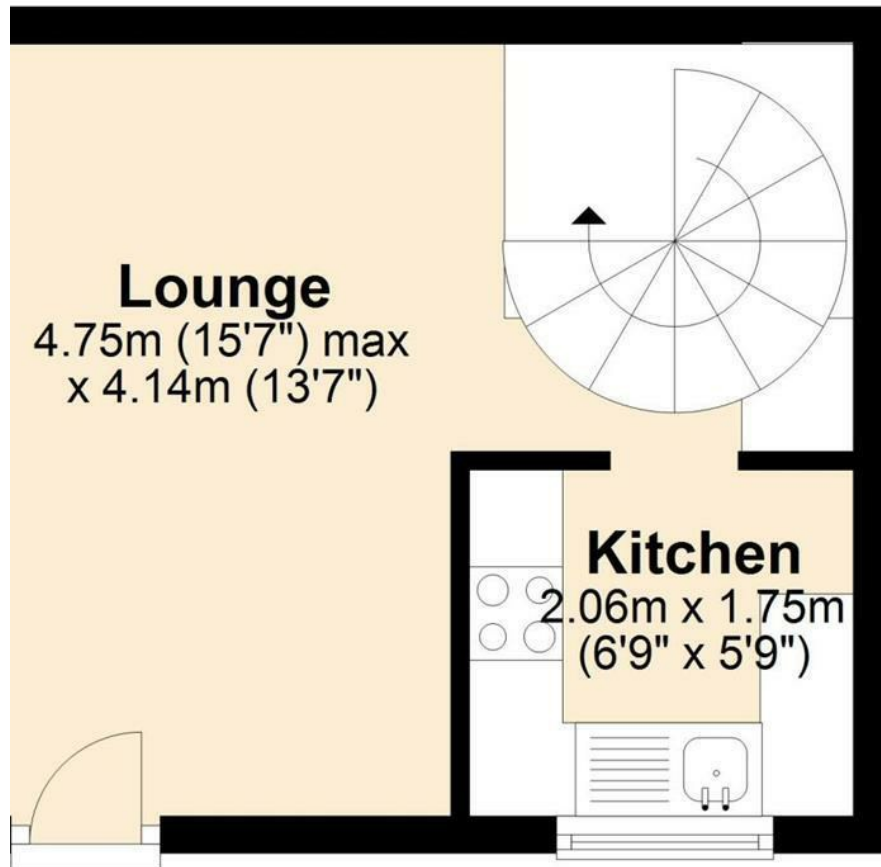
The accommodation is neatly arranged over two floors, with a spacious lounge diner and kitchen to the ground floor and a spacious double bedroom and bathroom to the first floor. Offered to the market with no onward chain, an internal viewing comes highly recommended.

THE HIGHLIGHTS _____

- End terraced house
- Generous double bedrooms
- Spacious living accommodation
- Two allocated parking spaces
- Convenient location
- No onward chain

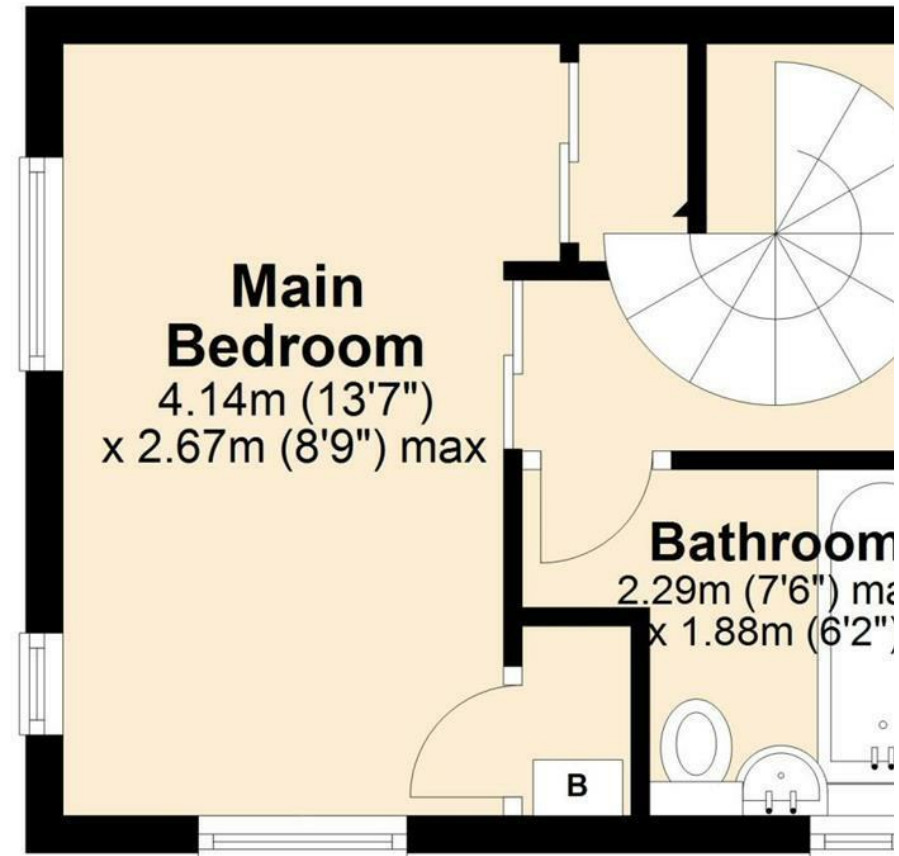
Ground Floor

Approx. 19.5 sq. metres (209.9 sq. feet)



First Floor

Approx. 19.7 sq. metres (212.3 sq. feet)



Total area: approx. 39.2 sq. metres (422.2 sq. feet)

Let's talk

01603 660000

sales@abbotfox.co.uk

@abbotfox

EPC RATING - D

Disclaimer – In accordance with the Property Misdescriptions Act, the company abbotFox gives notice that all descriptions, references to condition, necessary permissions for use and other details are given in good faith and believed to be correct, but any purchaser should not rely on them as statements of fact, and must satisfy themselves by inspection or other means, as to their accuracy.